

# How can students install Respondus LockDown Browser on Windows devices?

## Tell Me

If your instructor has specified the use of Respondus LockDown Browser for a quiz, you need to use it to take the quiz. The LockDown Browser is installed on many of the labs on campus. If you are using your personal computer or a university computer that does not have the LockDown Browser installed, you must install it before being able to take the quiz

### ! ALERT!

If you are employed by UNC Charlotte, you need to authenticate using your phone or tablet via DUO

#### 1. Access your quiz

- a. Access your Canvas course. If you do not have a quiz that uses Respondus LockDown Browser to take yet, you can [self-enroll in the Training - Test Respondus Canvas course](#) to read information about installing the LockDown Browser and access sample quizzes

### ! Please Note!

Respondus LockDown Browser does **not** work on Android, iOS, Kindle, etc.

- b. Click the quiz link (not illustrated)
- c. Click **Take the Quiz**

Quizzes > Quiz that Requires RLDB

## Quiz that Requires RLDB

Due	No due date	Points	2	Questions	2	Time Limit	None
-----	-------------	--------	---	-----------	---	------------	------

Requires Respondus LockDown Browser

### Instructions

Complete this quiz by due date.

**Take the Quiz**

#### 2. Prepare to install the Respondus LockDown Browser

- a. On the quiz page, you will see the message **This quiz requires Respondus LockDown Browser** on the page
- b. Click the **Download Respondus LockDown Browser** link. The **Respondus LockDown Browser Installation** page is displayed

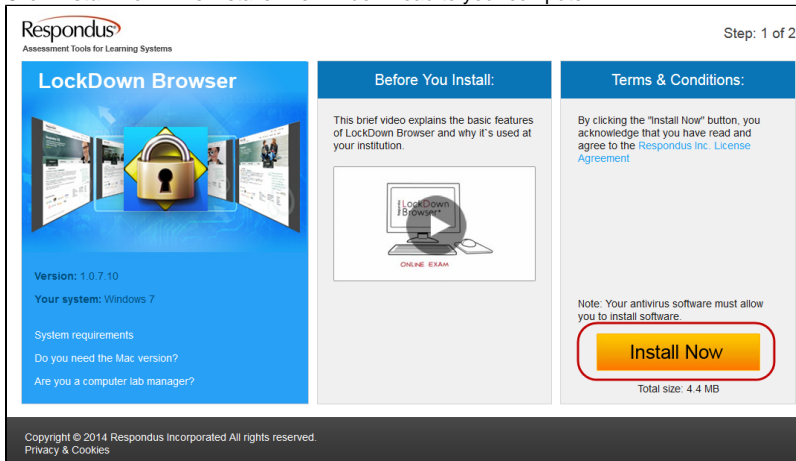
> Quizzes

### Respondus LockDown Browser Required

This quiz requires Respondus LockDown Browser. Please launch Respondus LockDown Browser to take this quiz or view your quiz results.  
If you have not already installed the browser, please download it from here ([Download Respondus LockDown Browser](#))

#### 3. Download the software

- a. Click **Install Now**. The installer file will download to your computer



4. Start the installation

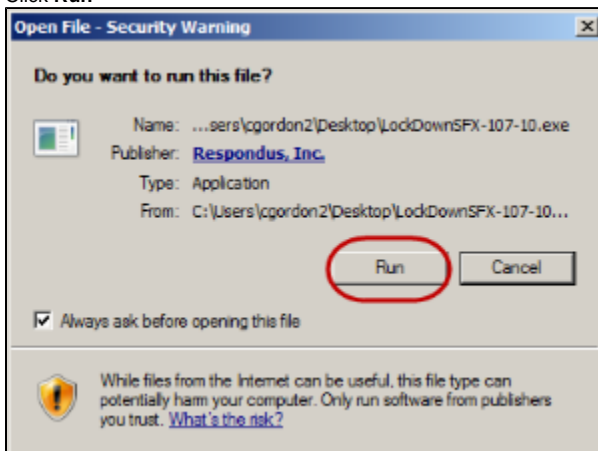


**Windows 10 Users!**

Save the file to your desktop. Once saved, find the file and double-click on it to start the installation. Skip to step 4d.

- a. Locate the installer and double click it

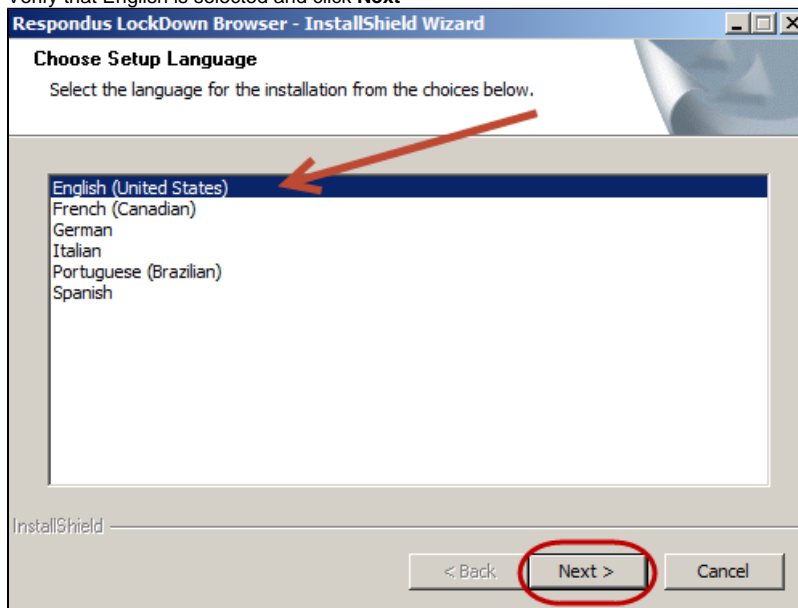
- b. Click **Run**



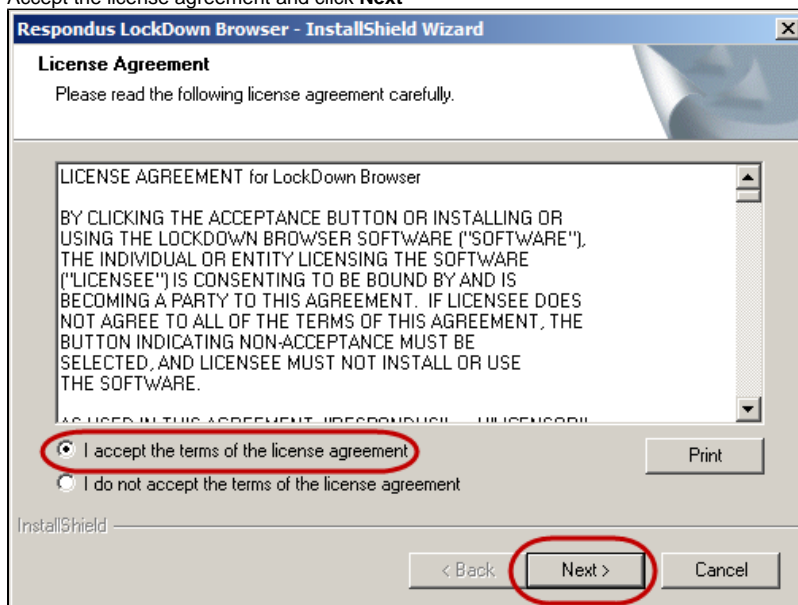
- c. Click **LockDown Browser Click to Install**



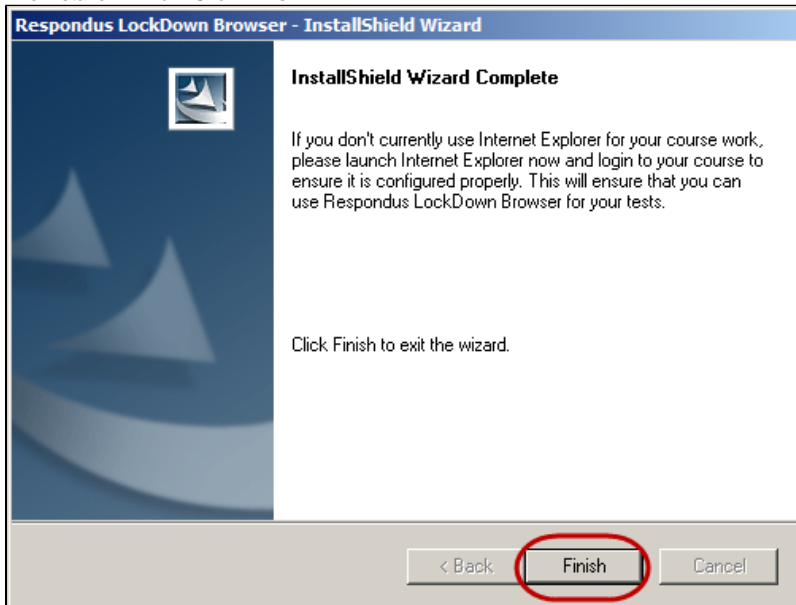
- d. Verify that English is selected and click **Next**



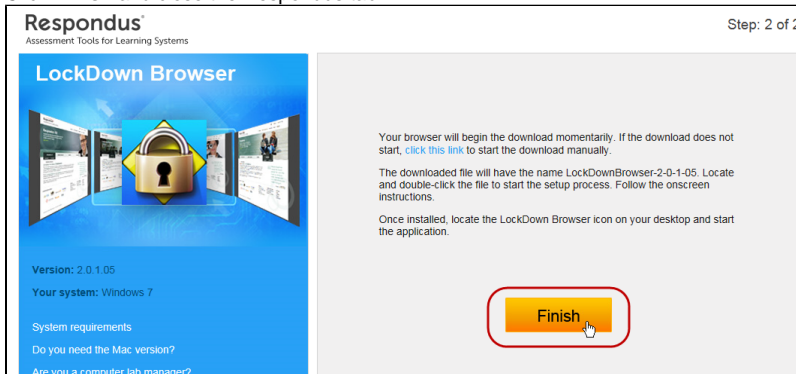
- e. Accept the license agreement and click **Next**



f. The installer will run. Click **Finish**



g. Click **Finish** and close the Respondus tab



h. The LockDown Browser is installed and a shortcut is added to your desktop



## Related FAQs

- [How do students install Respondus LockDown Browser on a Mac device?](#)
- [How can students install Respondus LockDown Browser on Windows devices?](#)
- [How do I use Respondus Lockdown Browser if I only have a Chromebook?](#)
- [What should an instructor do if a student does not have the correct equipment for Respondus Monitor?](#)
- [How do instructors create an online test in Canvas Using Respondus Monitor proctoring service?](#)